

## Wetting Front Sensor

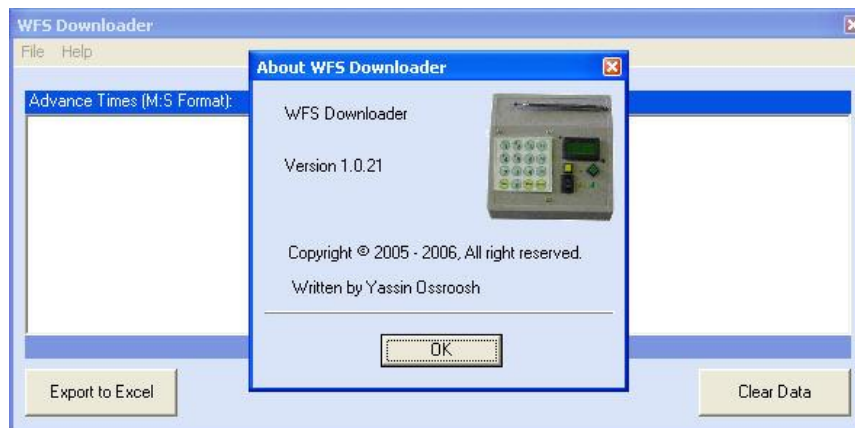
This device is suited to determine when to turn on/off the water in surface irrigation based on wetting front advance rates and other applications related to time-distance parameters. Also, one sensor can be placed at the end of a furrow to detect the completion of advance phase in a surge-irrigated field.



The set consists of two separate parts: a) the probes connected to the wetting front advance sensors which are installed at given spacing along the furrows and when the advance front reach them, automatically send an signal out, b) datalogger (receiver and detector of the signals). Two parts relate either in hardwired or wireless.



The cost of the wireless communication is more, but, the set is easily installed and removed. At the end of operating the system, by a graphical user interface named WFS Downloader, the data can be transferred to a personal computer and analyzed. The software is the capable of exporting advance times to Excel.



**Project Leader:** *Yassin Osroosh*

**Researchers:** *Y. Osroosh, A. Sanian and A. Mazaheri*

**Participants:** *Isfahan University of Technology*

**Financier:** *Isfahan University of Technology*

**Duration:** *2003-2004*